

Statewide Developmental Screening Supports Statewide ASQ Online Systems - FAQ

What is the statewide Ages and Stages Questionnaire (ASQ) Online system?

Kansas has worked for several years to standardize screening for children birth to Kindergarten entry using the Ages and Stages Questionnaire. Organizations across the state have been accessing ASQ Online on their own. Now, we are able to provide a Statewide ASQ Enterprise System to improve coordination and reach more families.

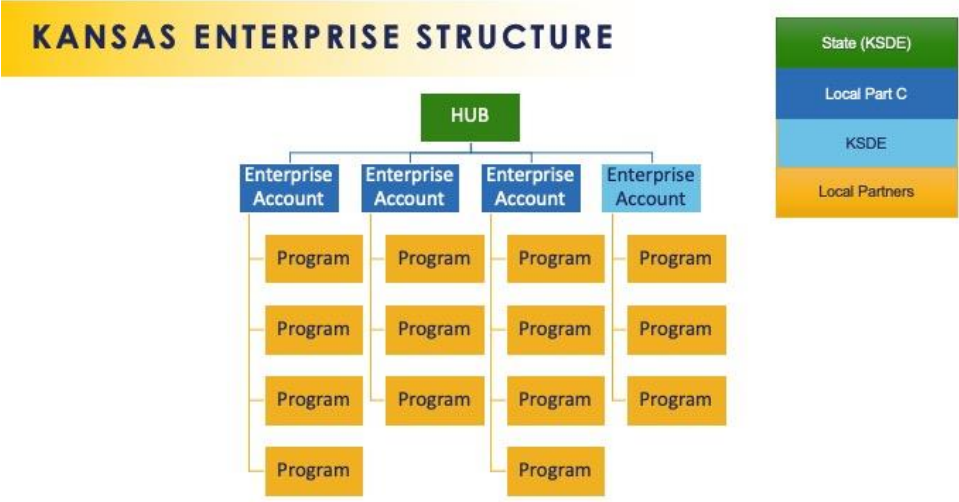
Definitions:

- **ASQ Online:** Web-based system for ASQ, offering online data management, questionnaire completion by hand or through the internet
- **ASQ HUB:** An account for bigger organizations that allows the organization to pull reports of de-identified data for linked ASQ Enterprise accounts
- **ASQ Enterprise:** An online data management system for ASQ-3 and ASQ:SE-2, that allows communities with multiple community partners to create individual programs in the system for each one
- **"Program":** Each community partner (each brick-and-mortar building/site in the ASQ structure) that will utilize the ASQ Online system that feeds up into the local Part C Network ASQ Enterprise Account

What will the structure of the statewide ASQ Online system look like?

Since 2020, a statewide contract between Kansas Department of Education (KSDE) and Brookes Publishing have funded one Hub account and Enterprise accounts (both administered by KSDE) to support the Kindergarten Readiness Snapshot initiative, as well as 29 geographic-based ASQ Enterprise Accounts administered by local Part C Networks.

Below is a general overview of what the structure looks like:



Is participating in the shift to statewide ASQ enterprise account mandatory for Kansas Part C networks?

Yes, although Part C networks have options around how they implement it. A statewide ASQ Online System provides the opportunity for a more streamlined and affordable system for developmental screening. It increases access to developmental screening and connection to supports and services for families, as well as provides aggregate level data to inform developmental health efforts across the state. Additionally, it promotes equity by ensuring that every community has access to developmental screenings.

What will the time commitment be for administering the local Part C ASQ Enterprise Network?

The anticipated time commitment is around 5% of one staff members time or around 8 hours per month; this is including time for outreach efforts.

Who should be the Part C ASQ Enterprise Administrator?

- Any individual within the local Part C organization can be the ASQ Enterprise Account Administrator
- It can be an individual from another organization, but it is encouraged that it is an individual from an entity in which your Part C network has a formal agreement (such as an MOU).

What are the responsibilities of the Part C Network?

The Part C Network is responsible for ensuring the ASQ Enterprise Account Administrator duties are carried out, whether the ASQ Enterprise Account Administrator is a member of the local Part C Network or comes from another community organization. ASQ Account Administrator duties are included below and will also be outlined in the KDHE contract modification:

- Adds new programs in the local Part C ASQ Enterprise Account

- Provide basic assistance or direct to appropriate resources for assistance in setting up and managing the programs within the local Part C ASQ Enterprise Account
- Transfer individual child records between programs within the Statewide ASQ Online System, if primary caregiver consent is provided
- Run or pull aggregate level data as requested/needed
- Maintain communication with ASQ Enterprise Statewide Hub administrator at KSDE
- Disseminate information to programs to keep them informed of the necessary technical system and statewide implementation updates for proper administration of the local Part C network ASQ Enterprise accounts
- Conduct outreach to programs in the areas that may want to join the local Part C Network ASQ Enterprise Account, including child care facilities, home visiting, health departments, doctors' offices, family services centers, and mental health providers.

What if I need help figuring out how to implement or need supports along the way?

Brookes Publishing is available to provide technical assistance and support on implementation. Contact Stacy Clarke at sclarke@ksde.org for more information. For questions about the Part C contract modification or federal guideline compliance, contact Tricia J. Waggoner [KDHE] at Tricia.J.Waggoner@ks.gov.

Is there a cost or fee involved for Part C ASQ Enterprise Administrator?

There is no fee. Costs are covered by the state. It is not expected that Part C programs will have to absorb any costs associated with account subscriptions and inputting screenings now or in the future.

What organizations may want to join our Enterprise account?

Medical providers, health departments, mental health providers, child care facilities, home visiting programs and other community partners that are providing or may want to start providing developmental screens.

Note: At this time the Kansas ASQ Online system does not interface with screenings embedded within an Electronic Health Record system.

What are the responsibilities of a program that joins our ASQ enterprise system?

Programs who join your Enterprise account will need to complete a Part C- [ASQ Enterprise User Agreement](#), which details the responsibilities of programs joining the account. Program responsibilities as outlined in this agreement are to:

- Follow-up with any developmental screening they receive
- Send proper referrals through previously established referral avenues (Phone, IRIS, Fax)

- Follow all federal, state and local laws and regulations applicable to your collection, sharing, and distribution of Data
- Gain parental consent to screen and utilize the universal screening consent form

Is there a fee involved for programs that want to join?

Each physical site (community partner program) needs starter kits to administer the ASQ, with the Kansas pricing discount each starter kit is \$265. Lower volume programs are able to purchase a kit together as long as 100 children or less are being served. But there is no cost to join the Enterprise system itself and those organizations that already have a kit can utilize the keycode that is associated with their current kit.

Do we need to provide developmental screenings?

Community programs within your local Part C Network ASQ Enterprise account will be performing the developmental screens. You are more than welcome to start using the ASQ-3 and ASQ:SE-2 as part of your Child Find efforts but you are not required to do so. It is important that the Part C programs continue to follow the procedures outlined in the Part C procedure manual as these requirements have not changed. Information related to [Child Find, Screening](#), and [Post-Referral processes](#) can be found in section VI, IX and X.

Does the ASQ Enterprise Account and being the Administrator as Part C change how we receive referrals?

No, community programs should continue to send proper referrals through previously established referral avenues. This will be detailed in the Part-C – ASQ Enterprise User Agreement that all community programs must agree to before joining the local Part C network ASQ Enterprise account. Screening conducted and entered into the ASQ Enterprise Account by a **community program** will **NOT** constitute as a Part C referral and will **NOT** start the Part C 45-day timeline to complete the initial evaluation and assessments and the initial Individualized Family Service Plan (IFSP) meeting. KDHE Part C has been in communication with the Office of Special Education Programs and will continue to partner with them to ensure alignment with IDEA as we update the Part C Procedure Manual.

Thank you for your efforts to ensure all Kansas children can access developmental and social-emotional screening.

Have more questions or want to talk further?

Contact Stacy Clarke at sclarke@ksde.org for more information.
