



ASQ-3 Cutoffs: How will switching to the ASQ-3 impact my program?

ASQ-3 Cutoffs: General Trends

Old vs. New Cutoffs

- Means are very similar.
- Total # of areas compared = 95
 - **59%** of cutoffs had little or no change to the cutoff scores.
 - **29%** of cutoffs had a 5 up to 10 point difference.
 - Only **11%** > 10 point difference.
 - Only one of the cutoffs with a > 10 point difference is now higher (10 mo GM).

Percentage of ASQ-3 normative sample with below cutoff scores

- Percentage with one area (or more) at or below cutoff.
 - Range = 12% to 19.2%
 - Average = 15.83%
- Percentage with two (or more) areas at or below cutoff.
 - 3.1% to 7.9%
 - 5.8%

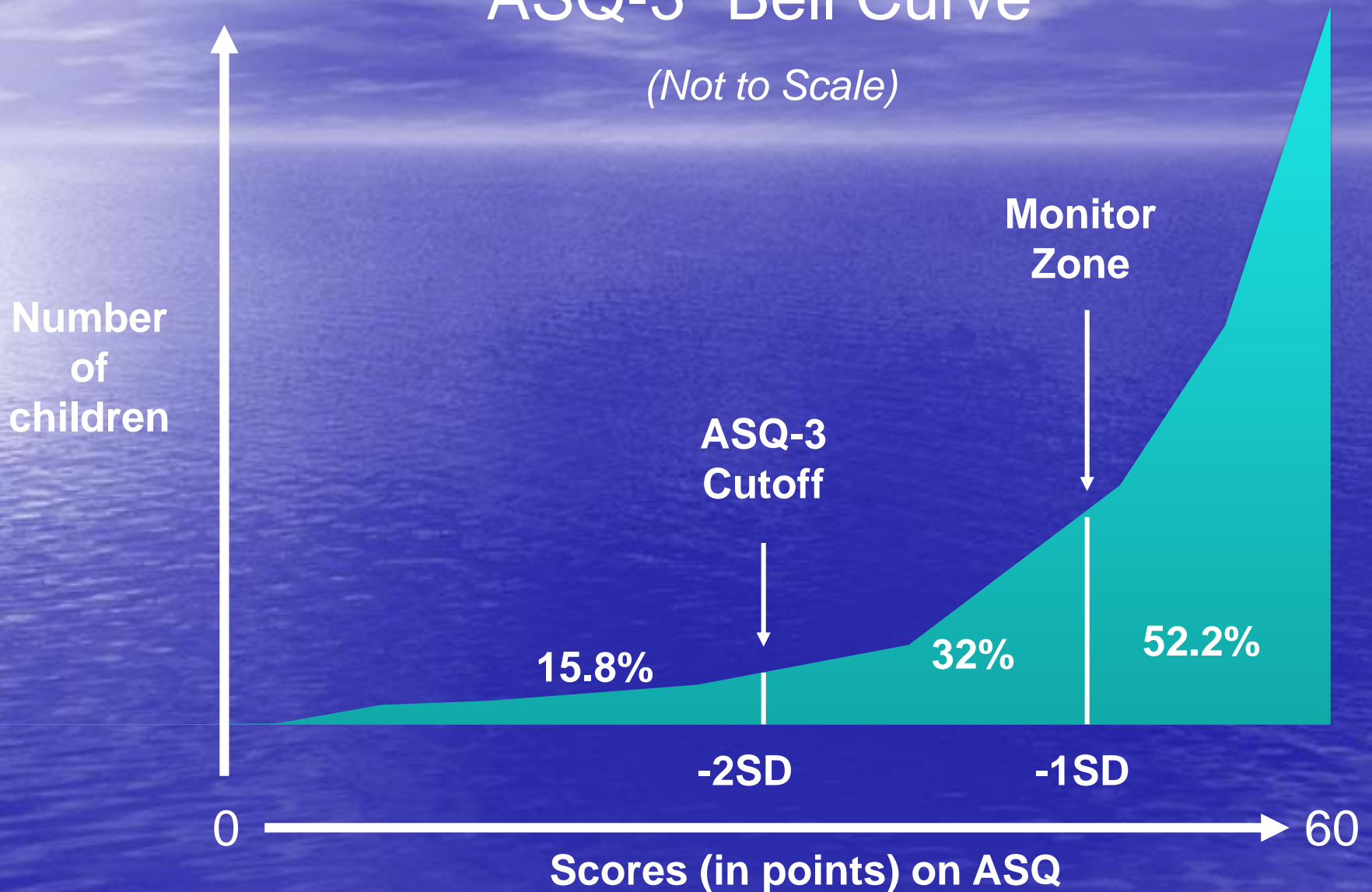
Percentage of ASQ-3 normative sample in monitor zone

- Percentage with one area (or more) in monitor zone.
 - Range = 26.4% to 38.4%
 - Average = 32%
- Implications?
 - Follow-up protocols should be realistic, in terms of time and cost to programs.



ASQ-3 “Bell Curve”

(Not to Scale)

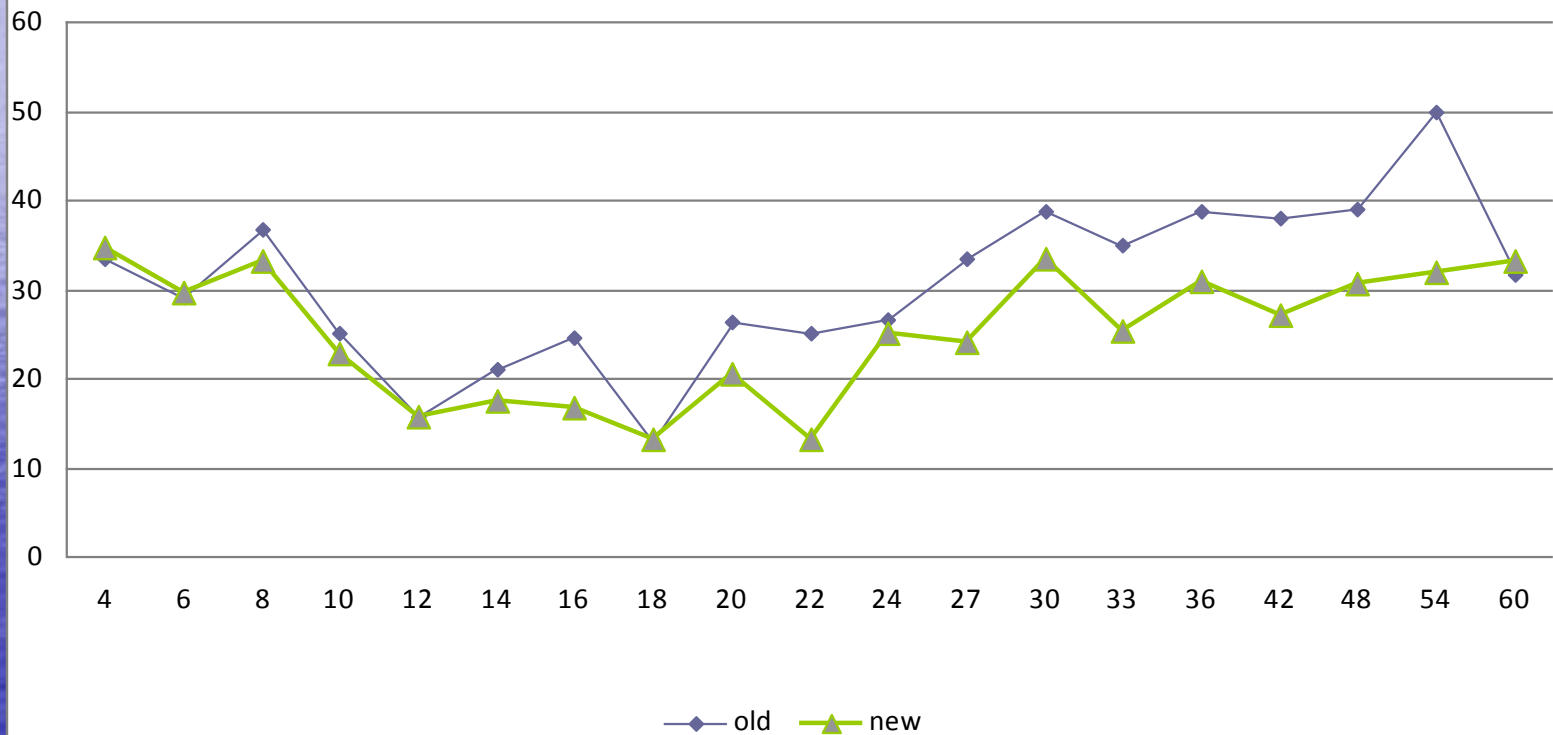


Cutoff Comparison Graphs

The remainder of slides are graphs comparing new cutoffs to old cutoffs.

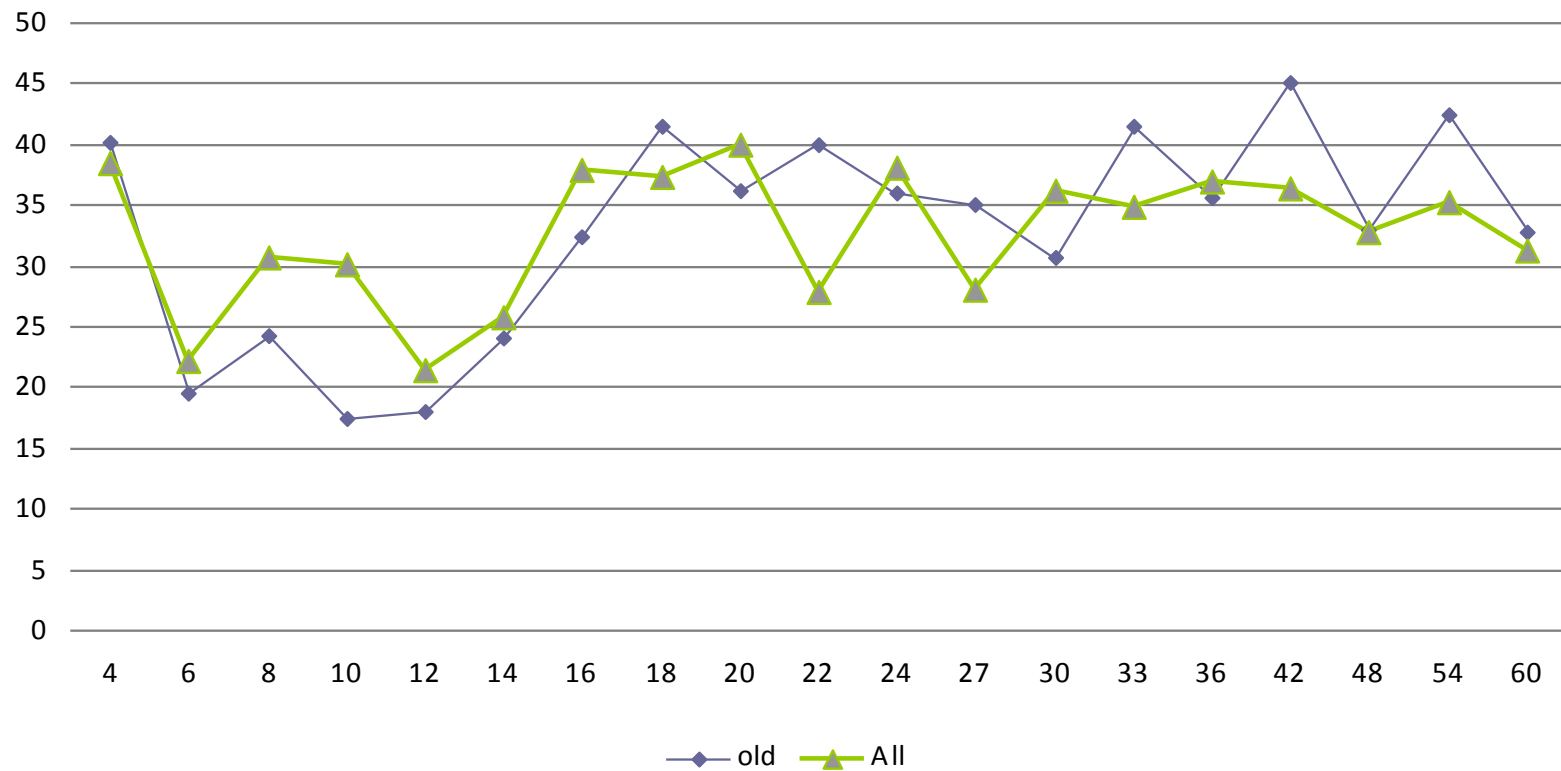
All Intervals

Communication - Cutoffs



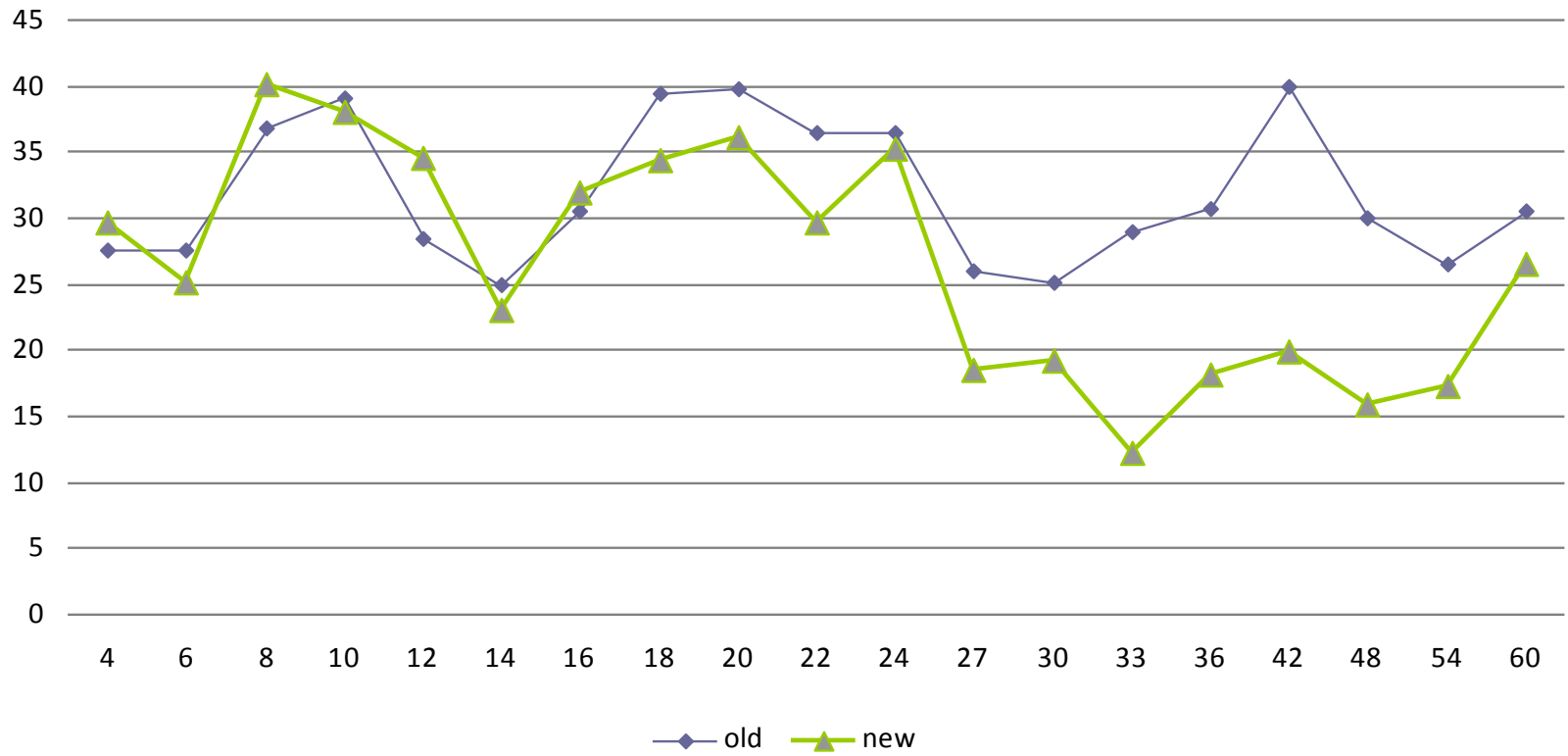
All Intervals

Gross Motor - Cutoffs



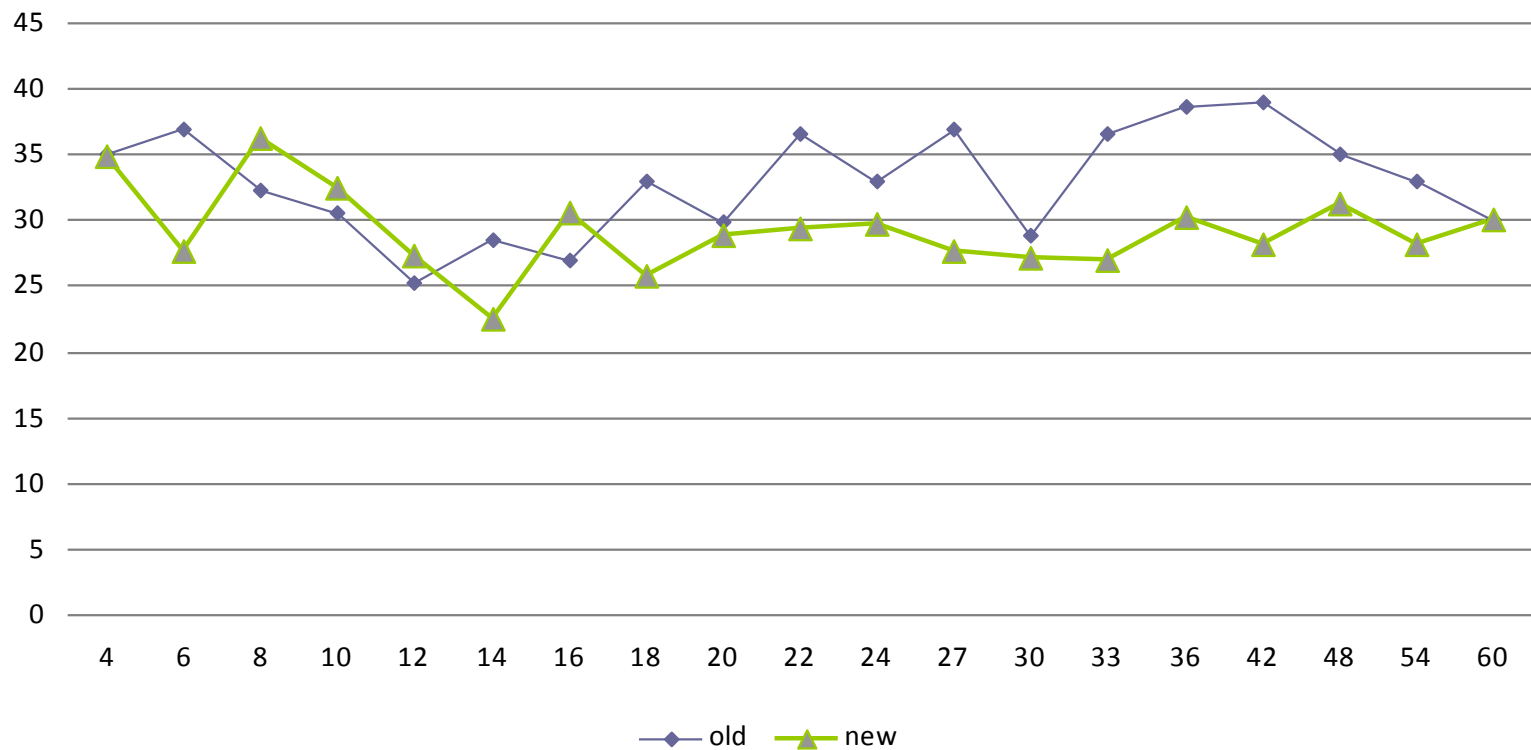
All Intervals

Fine Motor - Cutoffs



All Intervals

Problem Solving - Cutoffs



All Intervals

Personal-Social - Cutoffs

